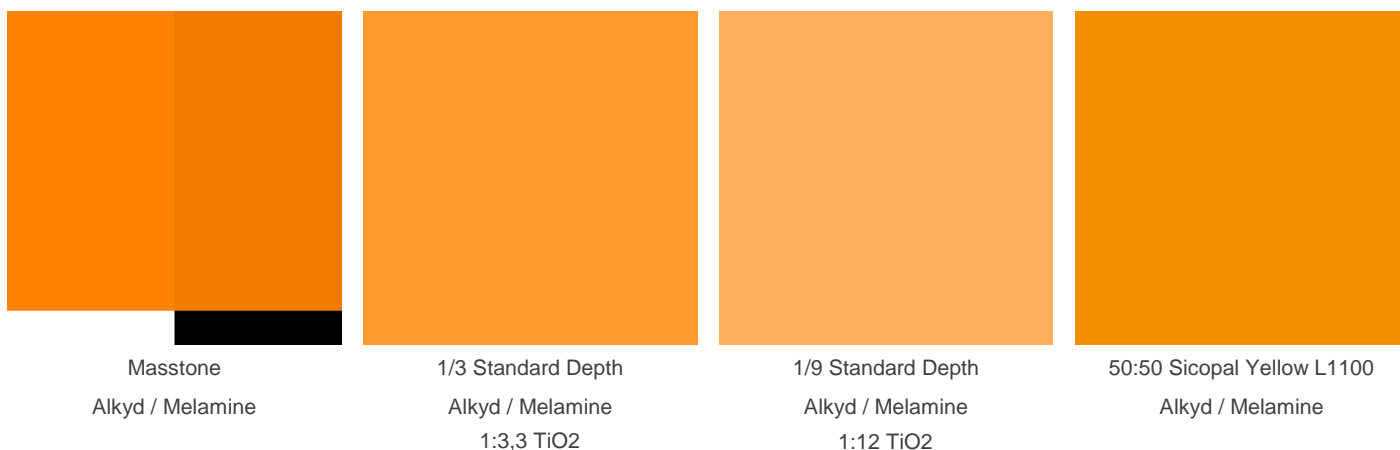


## Technical Datasheet

# Paliotol® Yellow L 2146 HD

highly opaque reddish isoindoline yellow for transportation and industrial coatings

Colour Index™	P.Y. 139   56298
Chemical Class	Isoindoline



### Weathering or Light Fastness

Acryl / Melamine Alkyd / Melamine

Masstone	4	4
1/3 Standard Depth	4	4
1/9 Standard Depth	3 - 4	3 - 4
50:50 Sicopal Yellow L1100	4 - 5	4 - 5

### Physical Properties

Bulk volume	3,8 L/kg	Oil absorption	50 g/100g
Conductivity	< 200 µS/cm	pH	4 - 7
Density	1,72 g/cm <sup>3</sup>	Specific surface	25 m <sup>2</sup> /g
Dry content	≥ 98,5 %	Thermal resistance	250 °C

## Chemical Fastness

of FullShade in Alkyd / Melamine

Substance	value (GS)
-----------	------------

Alkali (2% NaOH)	5
------------------	---

Acid (2% HCl)	5
---------------	---

## Suitability in Medium

Air-drying alkyd	●
------------------	---

Amine-curable	●
---------------	---

Acid-curable	●
--------------	---

Acrylic / isocyanate	●
----------------------	---

Water-based	●
-------------	---

Baking finishes	●
-----------------	---

## Suitability in Industry

Automotive	○
------------	---

Coil	●
------	---

Decorative	●
------------	---

General Industrial	●
--------------------	---

Powder	●
--------	---

Wood	○
------	---

## Solvent Fastness

Butyl acetate	5
---------------	---

MEK	5
-----	---

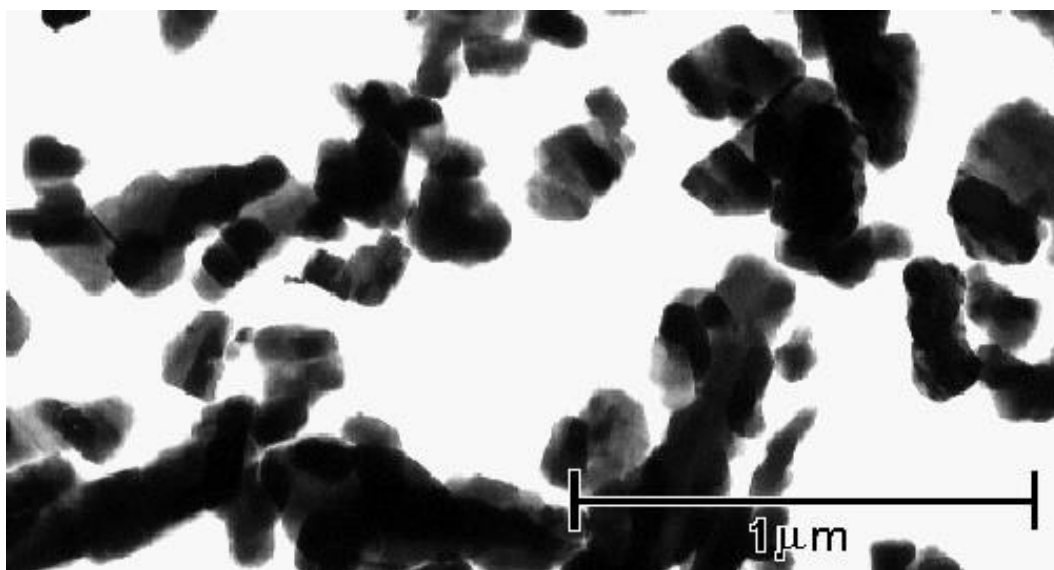
White spirit	5
--------------	---

Xylene	5
--------	---

Ethanol	5
---------	---

1-methoxypropan-2-ol	5
----------------------	---

## Electron Microscope Image



## Note

Although the information presented here is believed to be reliable, Sun Chemical Corporation makes no representation or guarantee to its accuracy, completeness or reliability of the information. All recommendations and suggestions are made without guarantee, since the conditions of use are beyond our control. There is no implied warranty of merchantability or fitness for purpose of the product or products described herein. In no event shall Sun Chemical Corporation be liable for damages of any nature arising out of the use or reliance upon the information. Sun Chemical Corporation expressly disclaims that the use of any material referenced herein, either alone or in combination with other materials, shall be free of rightful claim of any third party including a claim of infringement. The observance of all legal regulations and patents is the responsibility of the user.

Greyscale (GS) 5 (best) - 1 (worst); Blue Wool Scale (BWS) 8 (best) - 1 (worst)

suitable       potential suitable       not suitable