

Technical Datasheet

Paliogen® Blue L 6480

Transparent indanthrone blue with high chroma and color strength

Colour Index™	P.B. 60 69800
Chemical Class	Indanthrone



FullShade
Alkyd / Melamine



1/3 Standard Depth
Alkyd / Melamine
1:12,4 TiO2



80:20 Aluminum
two-coat metallic



50:50 Paliocrom Gold L 2000
two-coat metallic

Weathering or Light Fastness

Acryl / Melamine Alkyd / Melamine two-coat metallic

1/3 Standard Depth	4 - 5	4 - 5
80:20 Aluminum		5
50:50 Paliocrom Gold L 2000		5

Physical Properties

Bulk volume	2 L/kg	Oil absorption	40 g/100g
Conductivity	< 200 µS/cm	pH	5 - 8
Density	1,55 g/cm³	Specific surface	4 m²/g
Dry content	≥ 98,5 %	Thermal resistance	250 °C

Chemical Fastness

of FullShade in Alkyd / Melamine

Substance	value (GS)
-----------	------------

Alkali (2% NaOH)	5
------------------	---

Acid (2% HCl)	5
---------------	---

Suitability in Medium

Air-drying alkyd	●
------------------	---

Amine-curable	●
---------------	---

Acid-curable	●
--------------	---

Acrylic / isocyanate	●
----------------------	---

Water-based	○
-------------	---

Baking finishes	●
-----------------	---

Suitability in Industry

Automotive	●
------------	---

Coil	○
------	---

Decorative	○
------------	---

General Industrial	●
--------------------	---

Powder	○
--------	---

Wood	○
------	---

Solvent Fastness

Butyl acetate	4 - 5
---------------	-------

MEK	4
-----	---

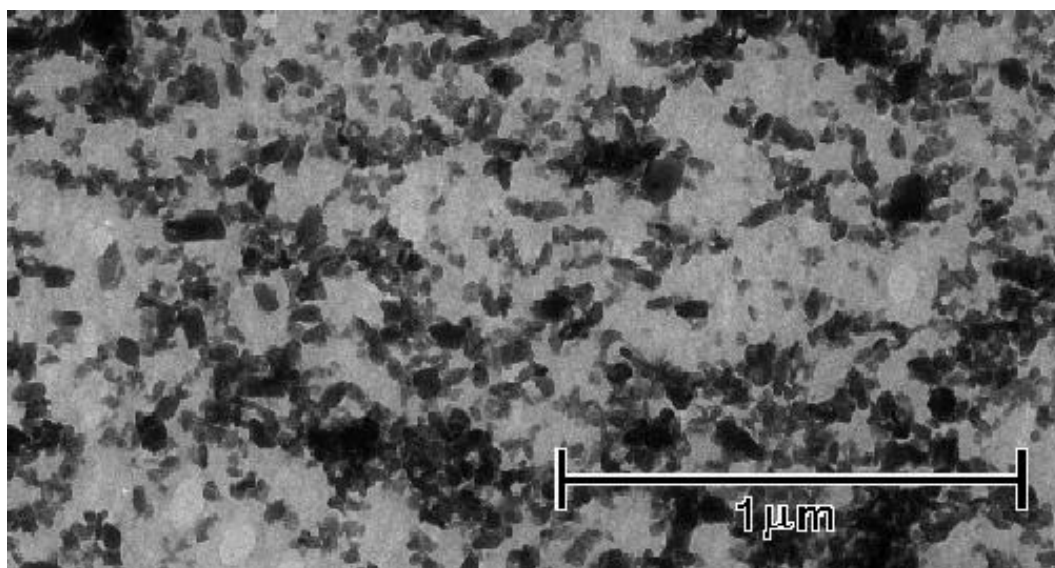
White spirit	5
--------------	---

Xylene	5
--------	---

Ethanol	5
---------	---

1-methoxypropan-2-ol	4
----------------------	---

Electron Microscope Image



Note

Although the information presented here is believed to be reliable, Sun Chemical Corporation makes no representation or guarantee to its accuracy, completeness or reliability of the information. All recommendations and suggestions are made without guarantee, since the conditions of use are beyond our control. There is no implied warranty of merchantability or fitness for purpose of the product or products described herein. In no event shall Sun Chemical Corporation be liable for damages of any nature arising out of the use or reliance upon the information. Sun Chemical Corporation expressly disclaims that the use of any material referenced herein, either alone or in combination with other materials, shall be free of rightful claim of any third party including a claim of infringement. The observance of all legal regulations and patents is the responsibility of the user.

Greyscale (GS) 5 (best) - 1 (worst); Blue Wool Scale (BWS) 8 (best) - 1 (worst)

suitable potential suitable not suitable