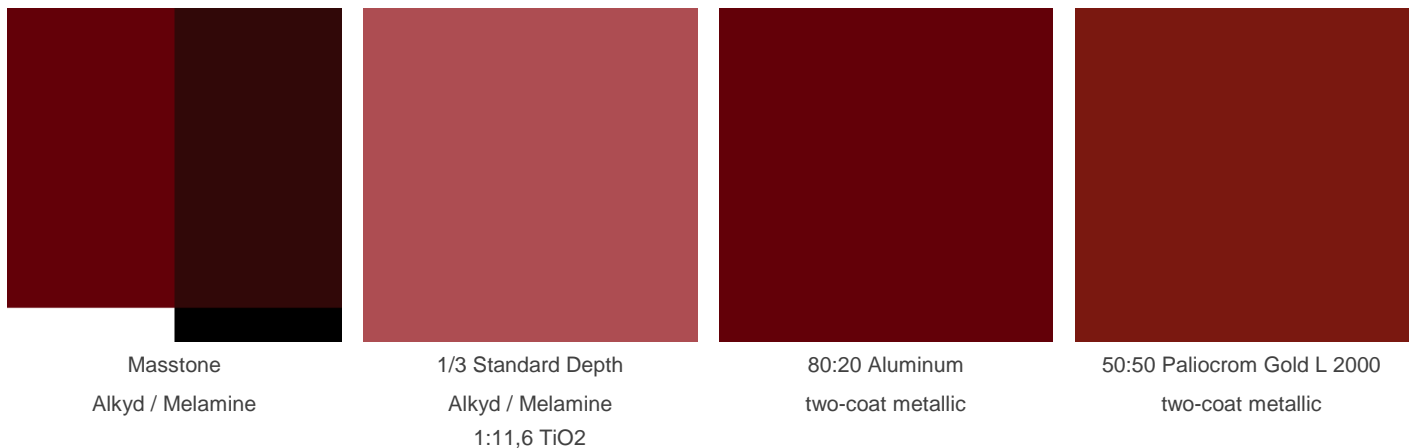


Technical Datasheet

Paliogen® Red L 3885

transparent perylene red pigment with high chroma

Colour Index™	P.R. 179 71130
Chemical Class	Perylene



Weathering or Light Fastness

Acryl / Melamine Alkyd / Melamine two-coat metallic

1/3 Standard Depth	4 - 5	4 - 5
80:20 Aluminum		4 - 5
50:50 Paliocrom Gold L 2000		4 - 5

Physical Properties

Bulk volume	2,1 L/kg	Oil absorption	35 g/100g
Conductivity	< 200 µS/cm	pH	7 - 10
Density	1,5 g/cm ³	Specific surface	39 m ² /g
Dry content	≥ 98,5 %	Thermal resistance	300 °C

Chemical Fastness

of Masstone over white in Alkyd / Melamine

Substance	value (GS)
-----------	------------

Alkali (2% NaOH)	5
------------------	---

Acid (2% HCl)	5
---------------	---

Suitability in Medium

Air-drying alkyd	●
------------------	---

Amine-curable	●
---------------	---

Acid-curable	●
--------------	---

Acrylic / isocyanate	●
----------------------	---

Water-based	○
-------------	---

Baking finishes	●
-----------------	---

Suitability in Industry

Automotive	●
------------	---

Coil	○
------	---

Decorative	○
------------	---

General Industrial	●
--------------------	---

Powder	○
--------	---

Wood	○
------	---

Solvent Fastness

Butyl acetate	5
---------------	---

MEK	4 - 5
-----	-------

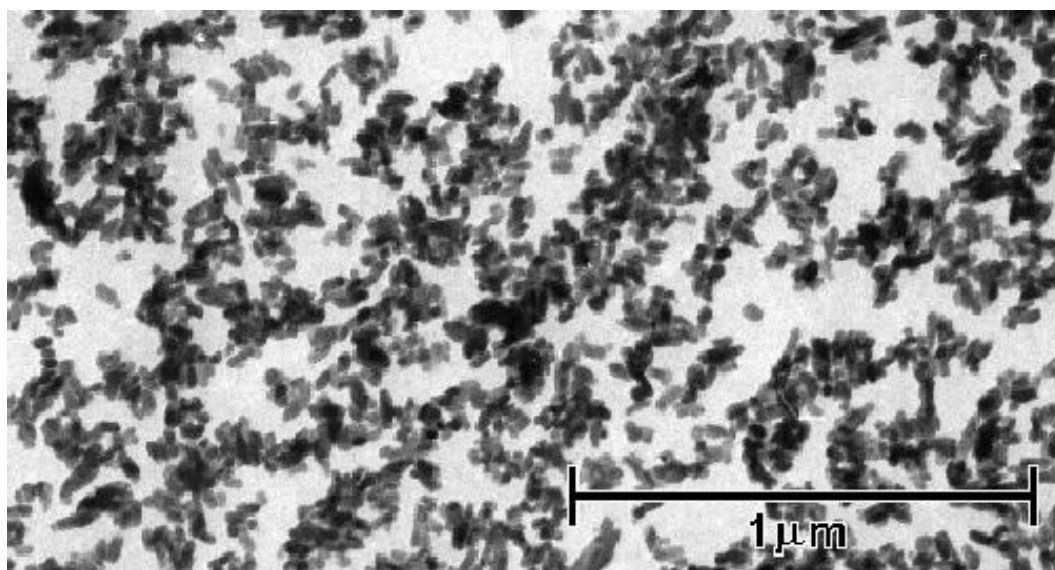
White spirit	5
--------------	---

Xylene	5
--------	---

Ethanol	5
---------	---

1-methoxypropan-2-ol	4 - 5
----------------------	-------

Electron Microscope Image



Note

Although the information presented here is believed to be reliable, Sun Chemical Corporation makes no representation or guarantee to its accuracy, completeness or reliability of the information. All recommendations and suggestions are made without guarantee, since the conditions of use are beyond our control. There is no implied warranty of merchantability or fitness for purpose of the product or products described herein. In no event shall Sun Chemical Corporation be liable for damages of any nature arising out of the use or reliance upon the information. Sun Chemical Corporation expressly disclaims that the use of any material referenced herein, either alone or in combination with other materials, shall be free of rightful claim of any third party including a claim of infringement. The observance of all legal regulations and patents is the responsibility of the user.

Greyscale (GS) 5 (best) - 1 (worst); Blue Wool Scale (BWS) 8 (best) - 1 (worst)

suitable potential suitable not suitable