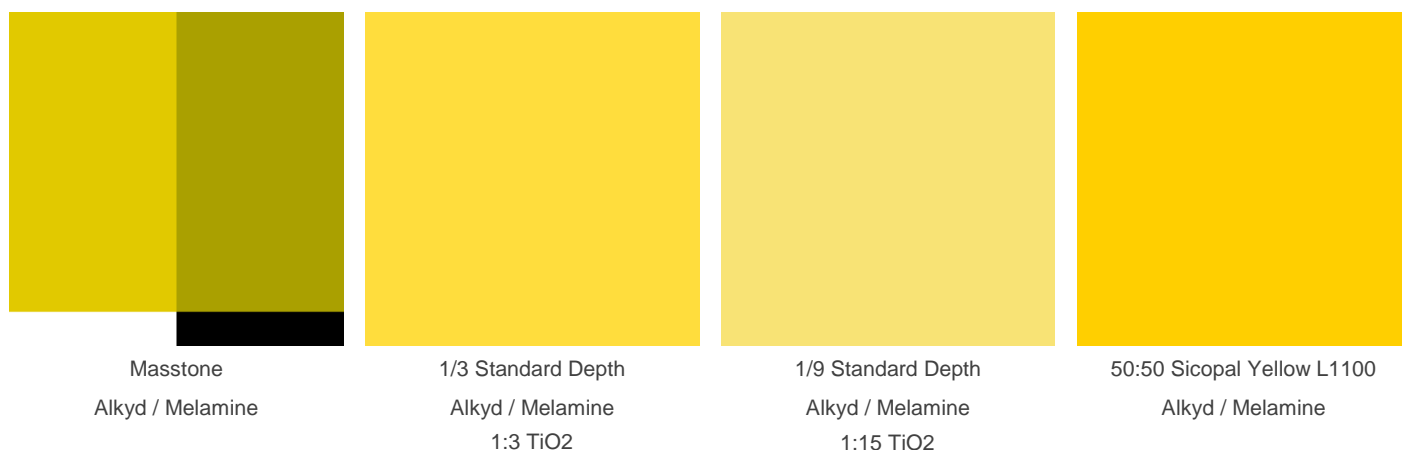


Technical Datasheet

Paliotol® Yellow L 0962 HD

opaque quinophthalone yellow with outstanding rheological properties

Colour Index™	P.Y. 138 56300
Chemical Class	Quinophthalone



Weathering or Light Fastness		
	Acryl / Melamine	Alkyd / Melamine
Masstone	4 - 5	4 - 5
1/3 Standard Depth	4	4
1/9 Standard Depth	3	3
50:50 Sicopal Yellow L1100	4 - 5	4 - 5

Physical Properties			
Bulk volume	3,8 L/kg	Oil absorption	30 g/100g
Conductivity	< 200 µS/cm	pH	3,5 - 6,5
Density	2,02 g/cm³	Specific surface	15 m²/g
Dry content	≥ 98,5 %	Thermal resistance	250 °C

Chemical Fastness

of FullShade in Acryl / Melamine

Substance	value (GS)
-----------	------------

Alkali (2% NaOH)	5
------------------	---

Acid (2% HCl)	5
---------------	---

Suitability in Medium

Air-drying alkyd	●
------------------	---

Amine-curable	●
---------------	---

Acid-curable	●
--------------	---

Acrylic / isocyanate	●
----------------------	---

Water-based	●
-------------	---

Baking finishes	●
-----------------	---

Suitability in Industry

Automotive	○
------------	---

Coil	●
------	---

Decorative	●
------------	---

General Industrial	●
--------------------	---

Powder	●
--------	---

Wood	○
------	---

Solvent Fastness

Butyl acetate	5
---------------	---

MEK	4
-----	---

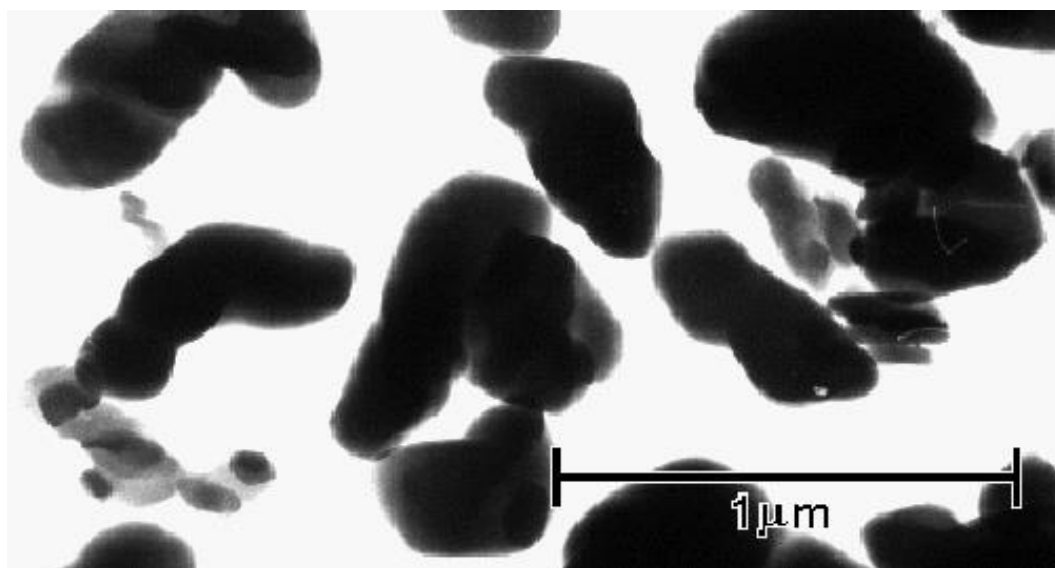
White spirit	5
--------------	---

Xylene	4
--------	---

Ethanol	5
---------	---

1-methoxypropan-2-ol	4 - 5
----------------------	-------

Electron Microscope Image



Note

Although the information presented here is believed to be reliable, Sun Chemical Corporation makes no representation or guarantee to its accuracy, completeness or reliability of the information. All recommendations and suggestions are made without guarantee, since the conditions of use are beyond our control. There is no implied warranty of merchantability or fitness for purpose of the product or products described herein. In no event shall Sun Chemical Corporation be liable for damages of any nature arising out of the use or reliance upon the information. Sun Chemical Corporation expressly disclaims that the use of any material referenced herein, either alone or in combination with other materials, shall be free of rightful claim of any third party including a claim of infringement. The observance of all legal regulations and patents is the responsibility of the user.

Greyscale (GS) 5 (best) - 1 (worst); Blue Wool Scale (BWS) 8 (best) - 1 (worst)

suitable potential suitable not suitable